



# How to Use Levemir® FlexPen®

This is a Quick Guide. Visit [Levemir.com](http://Levemir.com) or use the camera app on your phone to scan the QR code for Prescribing Information, including the full Instructions For Use.

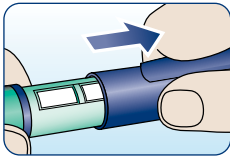
Levemir® FlexPen® is a single-patient-use disposable insulin pen.

## 1) Prepare your pen

Make sure you have the following items:

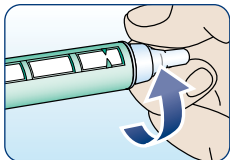
- Levemir® FlexPen®
- NovoFine® disposable needles\*
- Alcohol swab
- Sharps disposal container

**Do not share your Levemir® FlexPen® with other people, even if the needle has been changed. You may give others a serious infection or get a serious infection.**



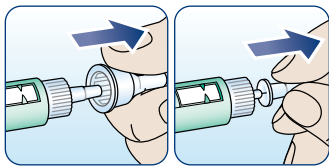
Wash your hands with soap and water. Read the label to check that you have the right insulin. Pull off the pen cap. Make sure the insulin is clear and colorless. Wipe the rubber stopper with an alcohol swab.

## 2) Attach a new needle



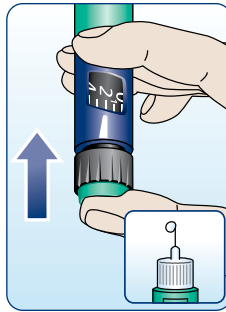
Pull off the protective tab from the needle. Screw the needle tightly onto your FlexPen®. Make sure the needle is straight.

Always use a new needle for each injection. Never place a needle on your pen until you are ready to give your injection.



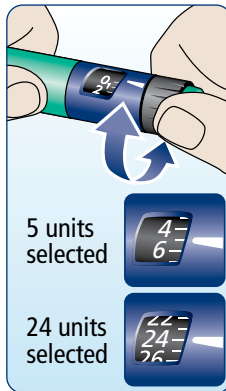
Pull off the big outer needle cap. Pull off the inner needle cap and throw it away.

## 3) Prime your pen



Before each injection, prime your pen by performing an airshot. Turn the dose selector to select **2 units**. Holding your pen with the needle pointing up, tap the cartridge gently with your finger a few times to make any air bubbles collect at the top of the cartridge. Press and hold the green push button. Make sure a drop of insulin appears at the needle tip.

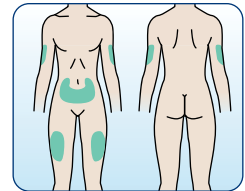
## 4) Select your dose



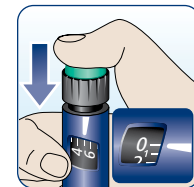
Turn the dose selector to the number of units you need to inject.

The dose can be corrected up or down by turning the selector in either direction until the correct dose lines up with the pointer. When turning the dose selector, be careful not to press the green push-button, as insulin will come out.

## 5) Give your injection



Levemir® can be injected under the skin of your stomach area, upper legs, or upper arms. Change (rotate) your injection site with each injection. If you choose to inject in the same area, always use a different spot in that area.



Wipe the injection site with an alcohol swab and let dry. Insert the needle into your skin. Inject the dose by pressing the green push-button all the way in until the 0 lines up with the pointer. Keep the needle in the skin for at least 6 seconds, and keep the green push-button pressed all the way in until the needle has been pulled out.

## 6) Remove the needle

**Do not recap the needle.** Carefully remove the needle and place it in a sharps container.

Replace the pen cap on the Levemir® FlexPen® and store the pen without the needle attached.

To learn more, please call 1-800-727-6500 or visit [Levemir.com](http://Levemir.com).

## For current users of Levemir® FlexTouch®

Starting early February, 2023, Levemir® will be sold in a slightly different type of pen, called FlexPen®. Levemir® FlexPen® is prefilled with the same insulin you are taking now, and is available for the same co-pay as Levemir® FlexTouch® on most managed care plans. You may need a new prescription for Levemir® FlexPen®, depending on the laws in your state. Be sure to review the instructions above on how to use the FlexPen®, and reach out to your health care team with any questions.



\*Needles are sold separately, will need a prescription, and need to be processed by a pharmacist. Needles and Levemir® FlexPen® must not be shared.

FlexPen®, FlexTouch®, Levemir®, and NovoFine® are registered trademarks of Novo Nordisk A/S. Novo Nordisk is a registered trademark of Novo Nordisk A/S.  
© 2022 Novo Nordisk All rights reserved. US22LV00014 December 2022

**Levemir®**  
insulin detemir injection 100 Units/mL